

Workshop of the Joint European Project “iKnow”

“Open Source Learning Management Systems (LMS) and Tools”



04.03.2011
Manfred Postel

CampusSource



1. **CampusSource** is an Open Source - initiative.
2. **CampusSource** is there for the set up and operating of virtual universities.
3. **CampusSource** brings results of research and development to a broad use.

Aim of CampusSource



- to start cooperative processes for developing software and software technology,
- to support the development of using new media with regard to education and further education.
- making platforms of a virtual university available to others for use and further developments in cooperation, without any fees.

Open Source-license



An Open Source licensing demands the **publishing of the source code** and allows every licensee to **modify the code** and **to pass it on**.

For the use of the software under an Open Source-license there are **no license fees**.




GPL



CampusSource chose the GPL, as one of the most well known open source-licenses and made it the basis for cooperative processes for the development of software systems and modules for the set up and operation of an infrastructure for computer and network based teaching and learning.

Open Source from a Sellers Point of View

Set up of a community of users, developers and discussion partners:

- wide distribution of software
 - exchange of user experience
 - support for troubleshooting and debugging
 - further development of the software
 - backflow of third parties developments
 - decentral, worldwide further development
- 

Open Source from a Users Point of View



- no license fees
- source code is available
- source code is allowed to be modified
- copies are allowed to be made and distributed
- adaptability of software to the individual needs of the user
- independence from hardware and software manufacturers



The CampusSource-Site



The screenshot shows the CampusSource website interface. At the top, there is a navigation bar with links: Home, About us, Contact, License, and Legal Notice, followed by a German flag. Below this is the 'CampusSource' header. A search bar is located on the left. A vertical menu on the left lists various categories: News, Exchange, Download, Software, Registration, Projects, Events, Cooperation, Open Source, E-Learning, Search, and Sitemap. The main content area features a list of updates with dates and version numbers, such as '2011.02 Update: Stud.IP 2.0' and '2011.01.21 Update: Stud.IP 1.11.1'. A section titled 'EDU Workspace' describes a network-based work and project platform. The bottom of the page shows a Windows taskbar with the Internet Explorer icon and a 100% zoom level.

CampusSource offers ten LMS and nine tools.

2011.02 Update: **Stud.IP 2.0**

2011.01.21 Update: **Stud.IP 1.11.1**

2011.01.14 Update: **ILIAS 4.1.4**

2011.01.05 Update: **ILIAS 4.0.11**

2011.01.03 Update: **Moodle 2.0.1**

2010.12.06 Update: **ILIAS 4.1.3**

2010.11.25 Update: **Moodle 2.0**

EDU Workspace
EDU Workspace (EWS II) is a network-based work- and project platform. A fundamental task of network-based applications is the publication and distribution of information in the internet. The rights to observe these information can either be public or reserved for members of work- and project groups. Additionally means of communication like E-mail distribution lists, Wiki, chats and forums allow a close collaboration.

CampusSource LMS



CampusSource tools



Features of Infrastructure Software



- provide general information
- administration of user data and material
- tools for creating multimedia content
- distribution and delivery of teaching and learning material
- means of communication and interaction
- interfaces for add-on services
- integration into an existing hard and software environment



CommSy is a web-based cooperation platform which supports asynchronous communication processes and cooperation in (learning) projects and (educational) institutions. Its target groups are projects, but it also supports entire organizations with several projects, e.g. universities.

Dr. Jackewitz
University of Hamburg



EDU Workspace



EDU Workspace (EWS II) is a network-based work- and project platform. A fundamental task of network-based applications is the publication and distribution of information in the internet. The rights to observe these information can either be public or reserved for members of work- and project groups. Additionally means of communication like E-mail distribution lists, Wiki, chats and forums allow a close collaboration.

Mr. Hüvelmeyer
University of Dortmund



ILIAS is a powerful web-based learning management system that allows to manage learning resources easily in an integrated system. ILIAS offers flexible course management, multiple ways to deliver learning content, incl. SCORM 2004, SCORM 1.2 and AICC, test and assessment, survey and much more.

Prof. Leidhold
University of Cologne



LON-CAPA



The Learning *Online* Network with Computer-Assisted Personalized Approach (LON-CAPA) is a distributed learning content management system, which enables the sharing and reuse of learning resources between different institutions, a course management system with functionality similar to commercial products, and an interactive homework system with particular strengths in math and science.

Prof. Kortemeyer

Michigan State University, East Lansing

metacoon



metacoon® is a modular and adaptable web platform for learning, cooperative authoring and project work. Individual learning and working environments of course or project teams can be arranged by collecting tools from the metacoon®-tool pool. Next to these protected environments a platform has a public website which can be used as homepage - of the educational institution - the course - or the professorship with information and content of expertise in its subject area.

Mrs. Zobel / Mr. Hupfer
University of Weimar



moodle



Moodle is a Learning Management System (LMS) - a software package designed to help educators create quality online courses. One of the main advantages of Moodle over other systems is a strong grounding in social constructionist pedagogy.

Mr. Dougiamas
Perth, Australien

OpenUSS & Freestyle Learning



The **Open University Support System** is a database centered administration system with focus on: communication and publication

Freestyle Learning (FSL) is a J2SE and GPL-based Learning Content System (LCS). FSL has the purpose to let you create and execute your multimedia contents.

Prof. Grob
University of Münster

Uni Open Platform



Uni Open Platform is a platform used for the web based administration of courses and students. The platform implements a decentralized structure and offers a role based access control with a roll based user interface. Course materials are automatically and periodically released. The Offline Navigator enables the automatic Download and organisation of course materials.

Prof. Kaderali

The FernUniversität/University of Hagen



Virtual University



The **Virtual University** is a central platform for the distribution of teaching and learning material with an integrated communication- and interaction-platform.

Prof. Schlageter

The FernUniversität/University of Hagen



Javanti



Javanti is an integrated development environment for e-learning applications. Virtual, interactive slides can be created for teaching, speeches or training in a very simple manner.

Mr. Windbrake

University of Applied Sciences Wedel



litw3



litw3 is a web-based literature management system, which enables working groups to enter literature data independent of location or time.

Mr. Goden
University of Münster



MILESS



MILESS is an institutional content repository, which archives full text documents as well as multimedia learning and teaching content such as animations, audio and video material, provides it for research purposes and publishes it via OAI and Web Services interfaces.

Dr. Lix

Universität of Duisburg-Essen

Multimedia Catalogue



MMC, the Multimedia Catalogue, is a repository for publishing and maintaining modular reusable learning content. This includes multimedia components such as Java applets, animations, graphics, images, or video clips but also self-contained textual teaching materials such as definitions, examples or exercises. The system is currently used to implement FernUniversität's electronic document server HADes.

Prof. Krämer

The FernUniversität/University of Hagen



openFuXML



openFuXML is an XML rendering framework, which realises the output of documents in several formats and for diverse user devices. In comparison to existing solutions, openFuXML offers a high degree of flexibility as well as an advanced output quality. In particular, the print version delivered by openFuXML is of superior quality if compared to other systems. openFuXML offers extensive support for scientific documents including a high quality output of mathematical expressions on paper and on screen.

Mr. Kisner

The FernUniversität/University of Hagen

SuperX



SuperX is a Data Warehouse for educational institutions that allows an integration of different types of data (e.g. number of students, exams, staff, finances). University employees or associates get access to this information via a WorldWideWeb-interface. The statistics are updated daily and can be aggregated according to the users' needs. .

Mr. Blotevogel / Dr. Quathamer
University of Duisburg-Essen

Virtuelles Prüfungsamt

VirPa



VirPa, the virtual examination office [in German, **Virtuelles Prüfungsamt**] is offered on the WWW to students of the university by the examination office. This interface gives students the option to retrieve general information from the examination office, to view the results of examinations, to register for examinations, to deregister from examinations, to view posted lists and to notify any changes of address.

Mr. Korff

University of Applied Sciences Bielefeld



WebAssign



WebAssign provides the infrastructure for the comprehensive execution of tutorials on the Internet.

Prof. Six

The FernUniversität/University of Hagen



The CampusSource-Site

The screenshot shows the CampusSource website interface. A large green arrow points from the left sidebar menu to the main content area, specifically highlighting the 'Software' section. The main content area displays a list of software updates and descriptions of various platforms like Moodle, SuperX, Stud.IP, ILIAS, and EDU Workspace. The website has a green and blue color scheme with a search bar and navigation links at the top.

campus
SOURCE

Home About us Contact License Legal Notice

the
onal
third

News
Exchange
Download
Software
Registration
Projects
Events
Cooperation
Open Source
E-Learning
Search
Sitemap

2011.02.02 · Update: **Moodle 2.0.2 and 1.9.11**

2011.02.02 · Update: **SuperX: ERFOLG-Modul 0.5 rc3, GAN-Modul 0.1 rc4, KENN-Modul 0.6 rc1, SOS-Modul 0.1 rc2 and ZUL-Modul 0.1 rc2**

2011.02.02 · Update: **Stud.IP 2.0**

2011.01.21 · Update: **Stud.IP 1.11.1**

2011.01.14 · Update: **ILIAS 4.1.4**

2011.01.05 · Update: **ILIAS 4.0.11**

2011.01.03 · Update: **Moodle 2.0.1**

2010.12.06 · Update: **ILIAS 4.1.3**

2010.11.25 · Update: **Moodle 2.0**

cooperation platform which supports asynchronous communication processes and cooperation in (learning) projects and (educational) institutions. Its target groups are projects, but it also supports entire organizations with several projects, e.g. universities.
University of Hamburg

EDU Workspace
EDU Workspace (EWS II) is a network-based work- and project platform. A fundamental task of network-based applications is the publication and distribution of information in the internet. The rights to observe these information can either be public or reserved for members of work- and project groups. Additionally means of communication like E-mail distribution lists, Wiki, chats and forums allow a close collaboration.
University of Dortmund

ews II

Internet 100%

How does the Software Exchange Area work



You have three possibilities to participate in the software exchange area:

1. You can use the software.
2. You can develop the software further and adapt it to your needs.
3. You can become an active member in the **CampusSource** - community.



How does the Software Exchange Area work



1. You can use the software:

- The documentation and installation descriptions are available to you.
- You can install the software.
- You don't pay any license fees.



How does the Software Exchange Area work



2. You can further develop the software and adapt it to your needs:

- You get the source code.
- You can adapt **CampusSource**-software to your own needs.
- Make your modifications available to everyone according the general terms of business by **CampusSource**.
- Ensure a fast quality increase of the software by pointing out bugs and creating patches.

Registered Users



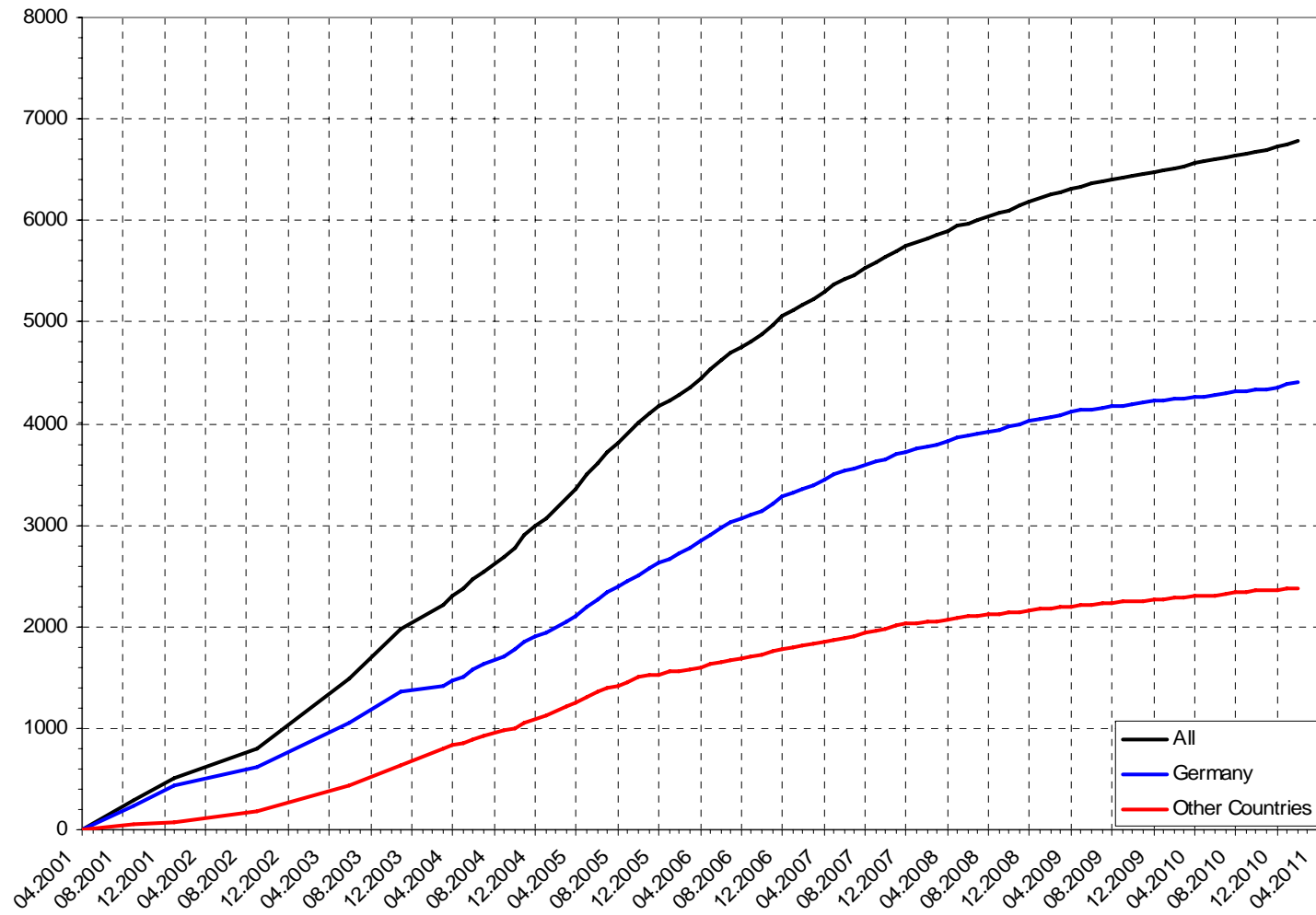
Overview of the registrations

- 6777 complete registrations
- 4401 registrations Germany
- 2376 registrations other countries

- Registrations from 132 countries

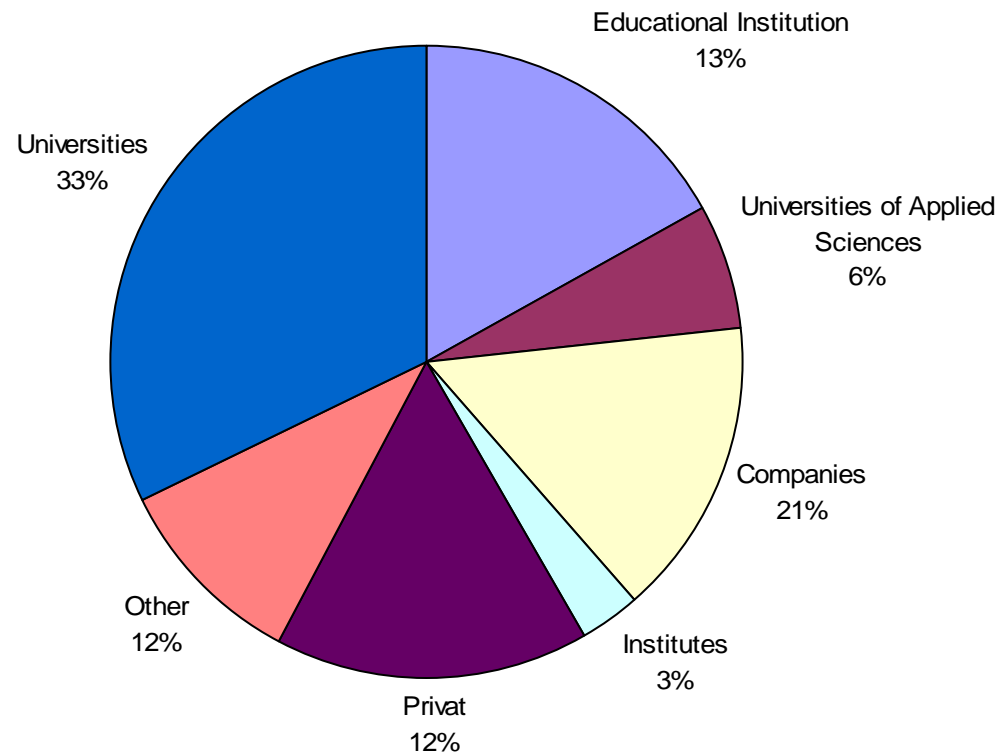


Trend of registrations



Distribution of registrations

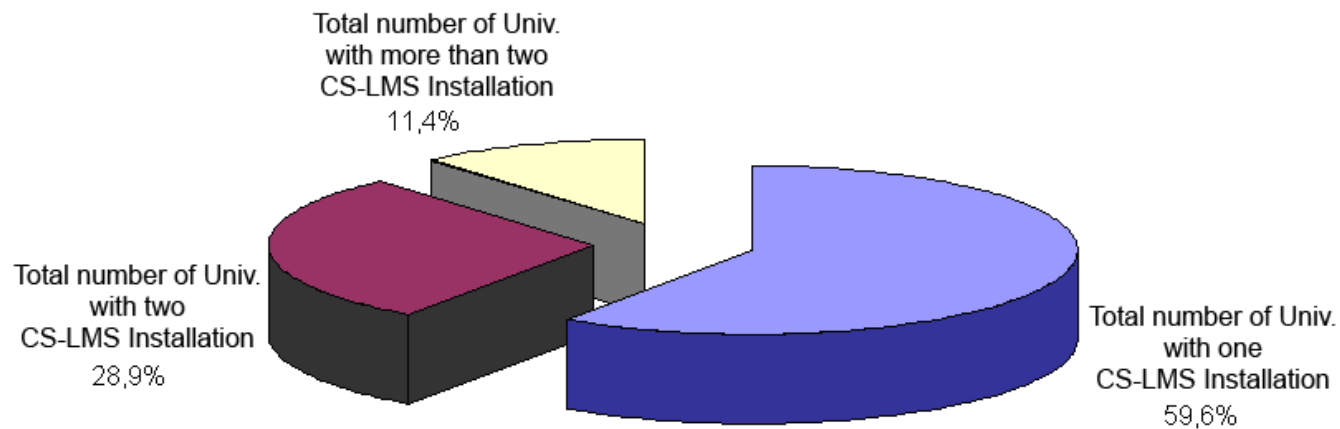
Registered User: 6777



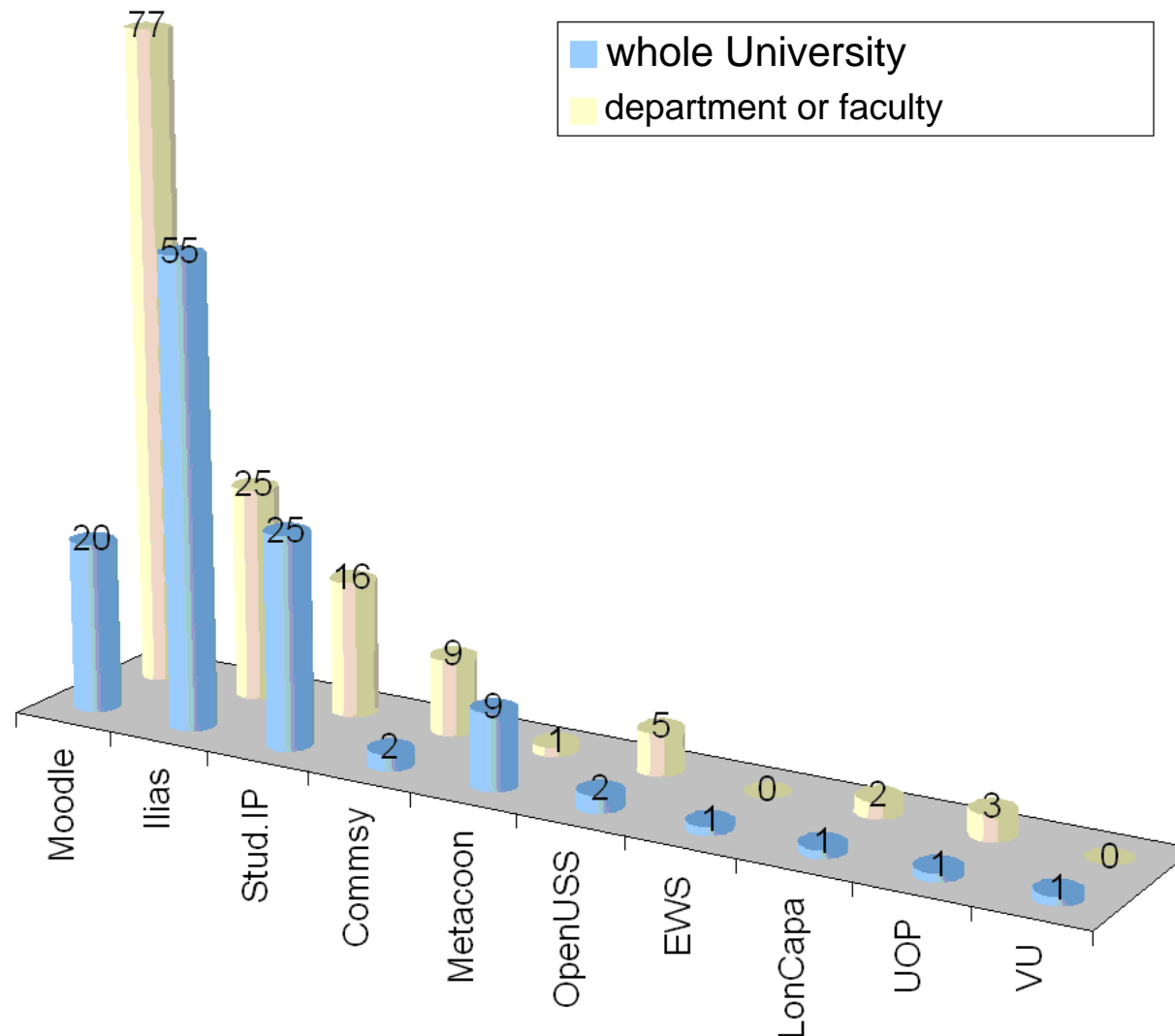
CampusSource LMS at German Universities



Total number of CS-LMS Installations	Total number of Univ. with one CS-LMS Installation	Total number of Univ. with two CS-LMS Installation	Total number of Univ. with more than two CS-LMS Installation
255	99	48	19

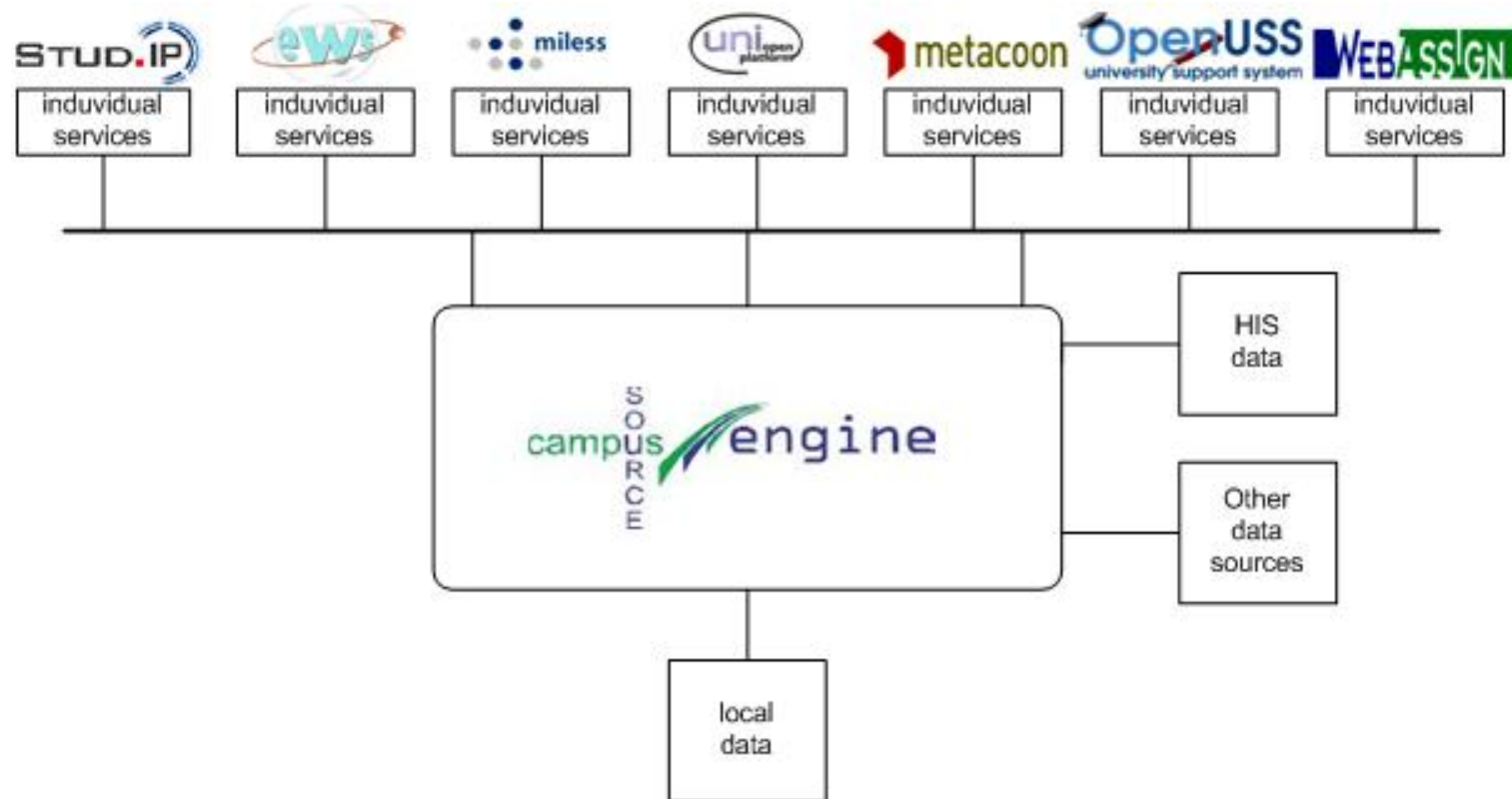


Relation LMS operation: whole University / department or faculty



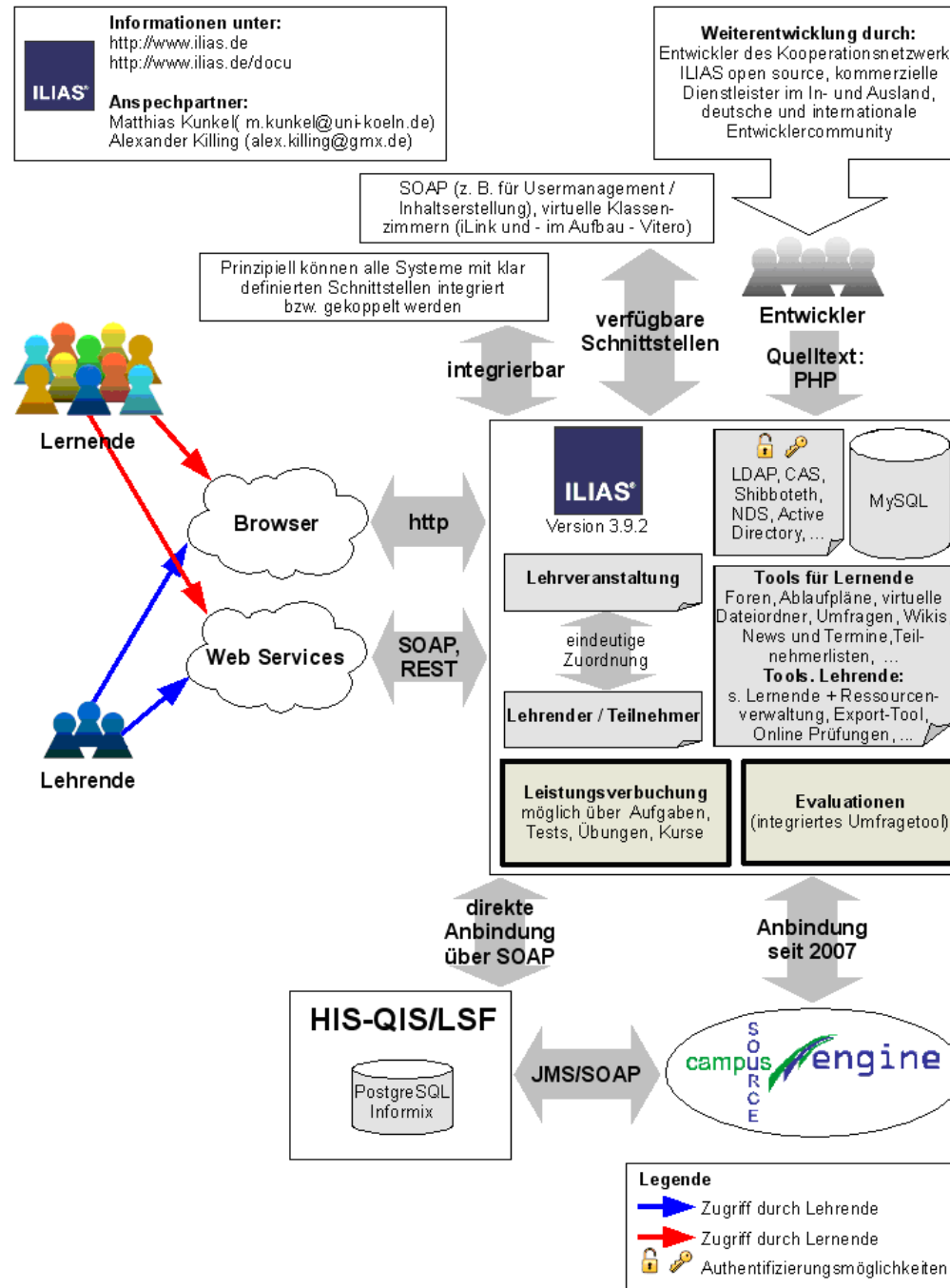
Project – CampusSource Engine

Middleware between LMS/tools and HIS Software

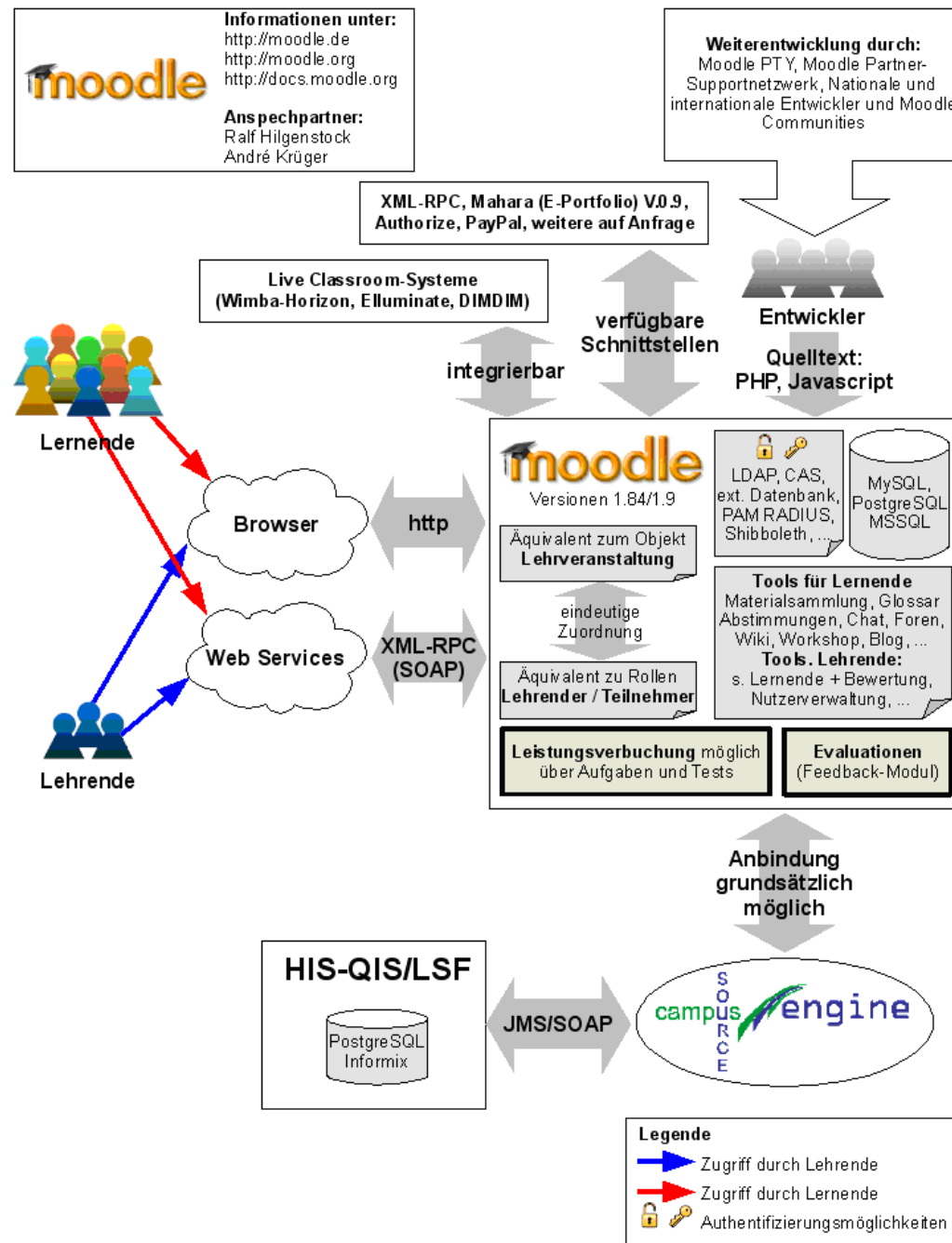


More Information: <http://cse.campussource.de>

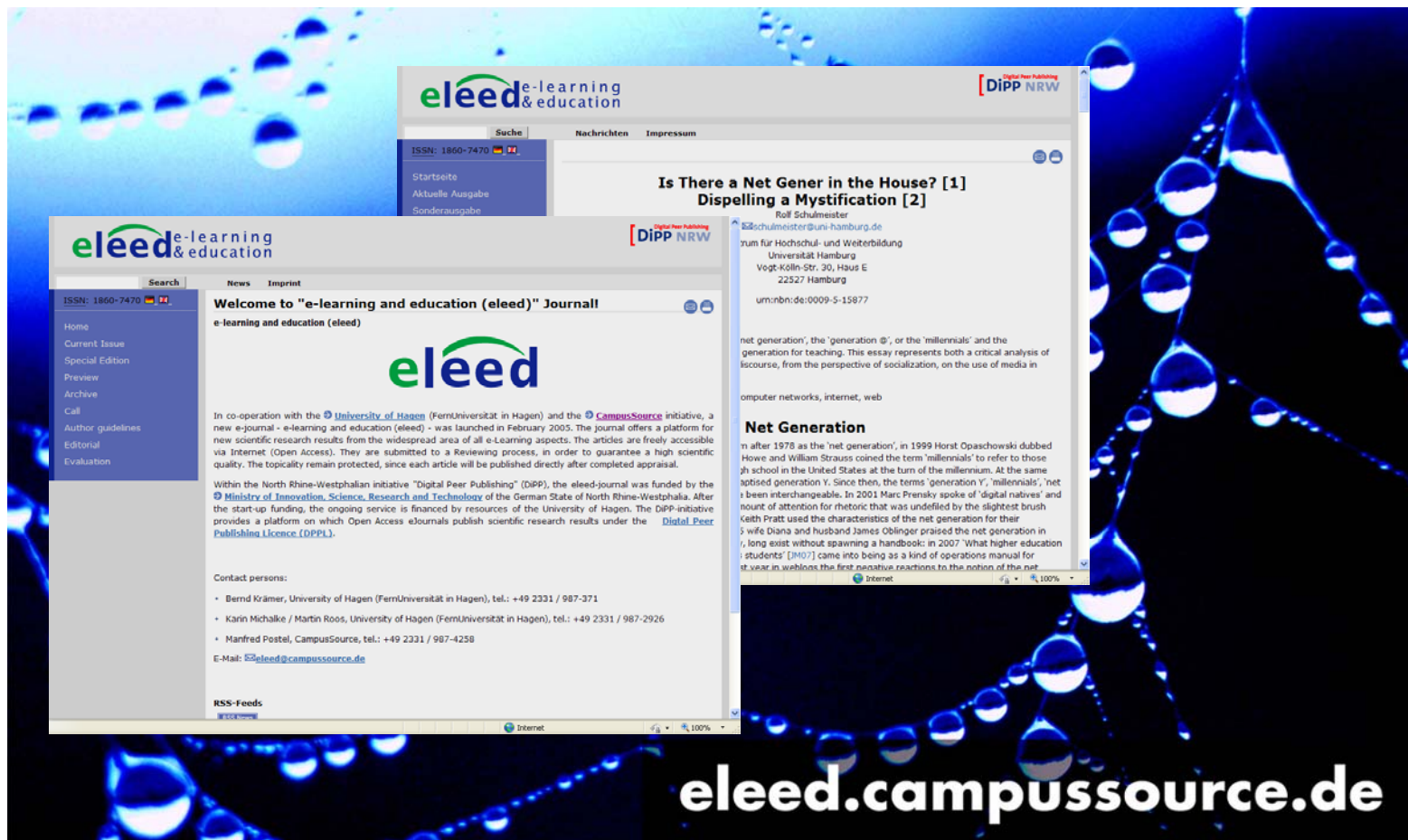
Scheme ILIAS



Scheme Moodle



Project – eleed



More Information / Contact



www.campussource.de/org

E-Mail: campussource@campussource.de

Phone: (+49) 2331 / 987 - 4258

Fax: (+49) 2331 / 987 - 4384

CampusSource office

at the FernUniversität/University of Hagen

Universitätsstraße 11

D - 58097 Hagen



Thank You for Your
Interest!

